

## ENERGY CITIES' FORUM 2022

### KEEPING OUR LINKS STRONG, BUILDING NEW ONES

Brussels, 21-22 April 2022



#### ENERGY CITIES HUB 5: RESOURCE-WISE & SOCIALLY JUST LOCAL ECONOMIES



#### WITHIN THE LIMITS OF SCARCITY: RETHINKING SPACE, CITY AND PRACTICES

TRANSITION LEADERS' PROGRAMME | 21<sup>ST</sup> OF APRIL 2022 | 10:30 - 12:00

In a world of finite resources, cities need to go on a **resource diet**. Beyond accounting for more than 70% of greenhouse gas emissions, cities require massive natural resources for their daily functioning and are crossed by important flows of materials and energy with a strong environmental and social impact. They are key players in minimising the use of resources and in developing circular models.

Therefore, how cities can promote another way of living and better use of local resources? How can local authorities rethink the notion of prosperity and growth?

In this session, we will hear first on the application of a **circular approach in Porto**. The roadmap for a circular Porto by 2030 brought together local key players to co-create responses to local challenges and raise awareness toward public and private stakeholders.

In the second part of the session, we will talk about **space as a resource** and address the empty buildings challenge. We will debate around vacant and underutilised spaces in cities and how they can become an answer to several challenges faced by local authorities, particularly by intensifying their use and building new models of resource management.

## AGENDA

10:30 – 10:35	Welcome and introduction to the workshop
10:35 – 10:55	<b>INSPIRATIONAL SPEECH</b>   A presentation of Porto circular strategy from: <ul style="list-style-type: none"> <li>▪ Rui Pimenta, Porto Energy Agency</li> </ul>
10:55 – 11:25	<b>DIALOGUE</b>   The empty buildings challenge: space as a scarce resource in cities and that is still underused. Let's get inspiration from the experience of Bruxelles with: <ul style="list-style-type: none"> <li>▪ Sâm Rosenzweig, co-founder of Communa</li> <li>▪ Martine Gossuin, head of support and strategy department, Citydev.brussels</li> </ul>
11:25 – 11:45	<b>QUESTIONS AND ANSWERS</b>
11:45 – 12:00	<b>CONCLUSION &amp; NEXT STEPS</b> This final part of the session will present the scope of HUB 5 and aims at collecting members' needs, ideas and inspirations on the topics addressed by this HUB.

\*More information about Energy Cities Annual Forum are available [here](#).



# RESOURCE-WISE & SOCIALY JUST LOCAL ECONOMIES



Energy Cities Forum  
Brussels

21 April 2022 (10:30 – 12:00)



# OUR SPEAKERS!



RUI PIMENTA,  
PORTO ENERGY  
AGENCY



SÂM ROSENZWEIG,  
COMMUNA



MARTINE GOSSUIN,  
CITYDEV.BRUSSELS



# FRUGAL & (SELF) SUFFICIENT CITIES



A SIGNIFICANT DECREASE OF DEMAND FOR GOODS & SERVICES



A DENSE FABRIC OF LOCAL ADMINISTRATIONS AND BUSINESSES RELYING ON LOCAL RESOURCES (LOW-TECH) AND KNOW-HOW FOR THEIR SUPPLY



A DEVELOPED SOCIAL AND SOLIDARITY ECONOMY, MADE UP OF FLEXIBLE STRUCTURES BASED ON SOLIDARITY NETWORKS AND PROMOTING EMPLOYEE INVOLVEMENT



A LOCAL CIRCULAR ECONOMY, PROMOTING REUSE, RECYCLING AND REPAIR PRACTICES



DECARBONISATION OF ECONOMIC ACTIVITIES AND RECONVERSION OF RELATED JOBS

# WHAT IS THE 'RESOURCE-WISE & SOCIAL JUST LOCAL ECONOMIES' HUB ABOUT?

1

SUFFICIENCY – SOBRIETE

2

CIRCULAR ECONOMY/CITY

3

SHARING & COLLABORATIVE  
LOCAL ECONOMY

↑  
SOCIAL JUSTICE  
↓

# 1 SUFFICIENCY – SOBRIETE

- › An adequate scale of living, an amount that is enough or good enough
- › In strong contrast with our current way of functioning
- › Confusion between efficiency and sufficiency
- › No integrated sufficiency plan at local level

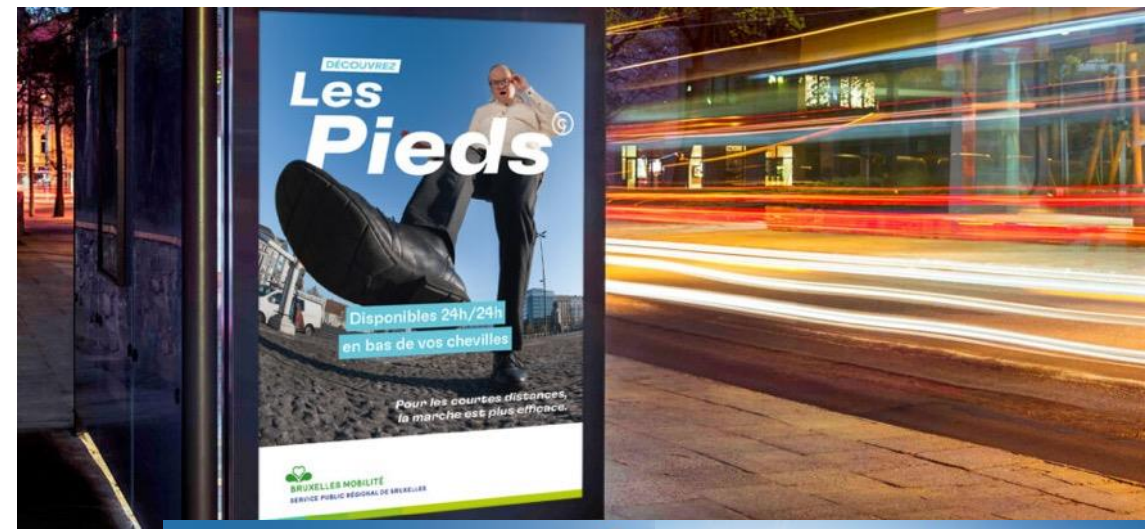


# 1 SUFFICIENCY – SOBRIETE

Make it fun and desirable !

Characteristics of sufficiency actions:

- Inexpensive
- Can be set up quickly
- Equity
- Their benefits contribute to the resilience of the territory





## 2 CIRCULAR ECONOMY/CITY

- › New models of resource management – how to minimise flows crossed in cities?
- › Relocalisation of productive activities – how to bring production closer to consumption? What are the implications for a territory, particularly in terms of jobs creation?
- › Management of vacant spaces, brownfields: how to maximise existing assets and resources and the pooling of facilities?



## NEXT STEPS

- › Online meeting on project ideas and funding (first week of June)
- › Webinar on sufficiency (first week of June)
- › Series of interviews with members (starting with May)
- › Development of project pipeline (starting with June)
- › Call for a pool of spokespersons (starting with May)
- › Call for follower cities, set up and co-design of an Academy focused on regeneration of historic urban areas (starting with May)

# THANK YOU!

Kinga Kovacs – [kinga.kovacs@energy-cities.eu](mailto:kinga.kovacs@energy-cities.eu)

Thibaut Maraquin – [thibaut.maraquin@energy-cities.eu](mailto:thibaut.maraquin@energy-cities.eu)



The background image shows a large, dimly lit, and abandoned office space. Several black office chairs are scattered across the floor. The room has large windows on the left side, and the ceiling is high with visible structural elements. The overall atmosphere is one of neglect and decay.

# **Communa**

## **Social Temporary Use in Brussels**

**21/04/2022**  
**Energy Cities' Forum 2022**



## **Summary**

- 1. Brussels, is full...**
- 2. Social Temporary use & Communa**
- 3. A few examples**
- 4. STUN**



Brussels, is full...



co  
mmu  
na



...of empty spaces



co  
mmu  
na



# Empty spaces in Brussels



Up to 30.000 empty houses/apartments

10% of social housing

+1,5 million m<sup>2</sup> empty office spaces

+5000 floors above shops

**Total = 6,5 millions m<sup>2</sup> are empty !**



An aerial, top-down view of a cobblestone-paved street at night, transformed into a vibrant outdoor festival. The scene is filled with people engaged in various activities. On the left, a long white table is set up with drinks and small items, with people gathered around it. In the center, a group of people is seated around a wooden table, possibly having a meal or a discussion. To the right, a small stage area is visible where two people are performing or playing music. Further right, a person is seated at a small table, and another person is standing nearby. The street is decorated with colorful flags and banners strung across it. The overall atmosphere is one of community and temporary use of public space.

# Temporary use

## Transform vacancy into resources



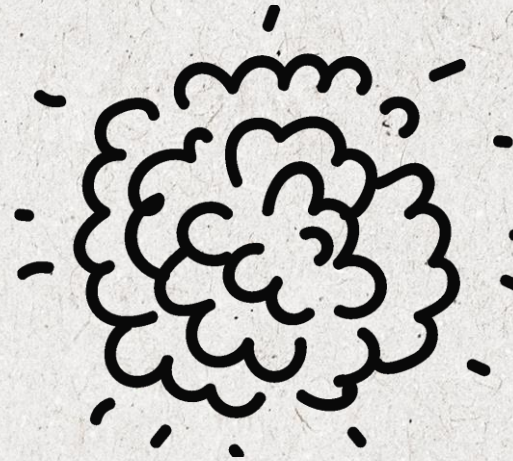




# Two sides to temporary use

---

PROFIT-MAKING  
APPROACH



SOCIAL PURPOSE  
APPROACH



# Social temporary use

---

Answers to urgent urban needs

→ Housing for the homeless

Experiment by building « Social labs »

→ Circular economy, fabLabs, transition and resilience



Prefiguration & « Maîtrise d'usages »

→ In field testing potential uses to adapt the plans

→ « Transitory Use »

CO  
mmu  
na



## **Our mission**

« Contributing to turn cities into affordable, democratic,  
resilient and creative places »

co  
mmu  
na



# Our Vision

---

- 1. OCCUPY** empty buildings for social & creative purposes
- 2. MUTUALIZE** tools & ressources
- 3. PERPETUATE** the social impact of each project
- 4. SPREAD** the best practices
- 5. FEDERATE** the engaged stakeholders
- 6. INSTITUTIONALIZE** the creative & social purpose

CO  
mmu  
na





communa  
2020-2021



# Recognition

---



**Winner Prix de l'Economie  
Circulaire 2017 & 2018**



**Approved Association  
d'Insertion  
Par le Logement depuis 2018**



**Winner Prix de l'Économie Sociale  
2018**



**Winner of the European  
Network of cities in Social  
Economy Excellence Award  
2019**

co  
mmu  
na



# Communa today

**19 employees**

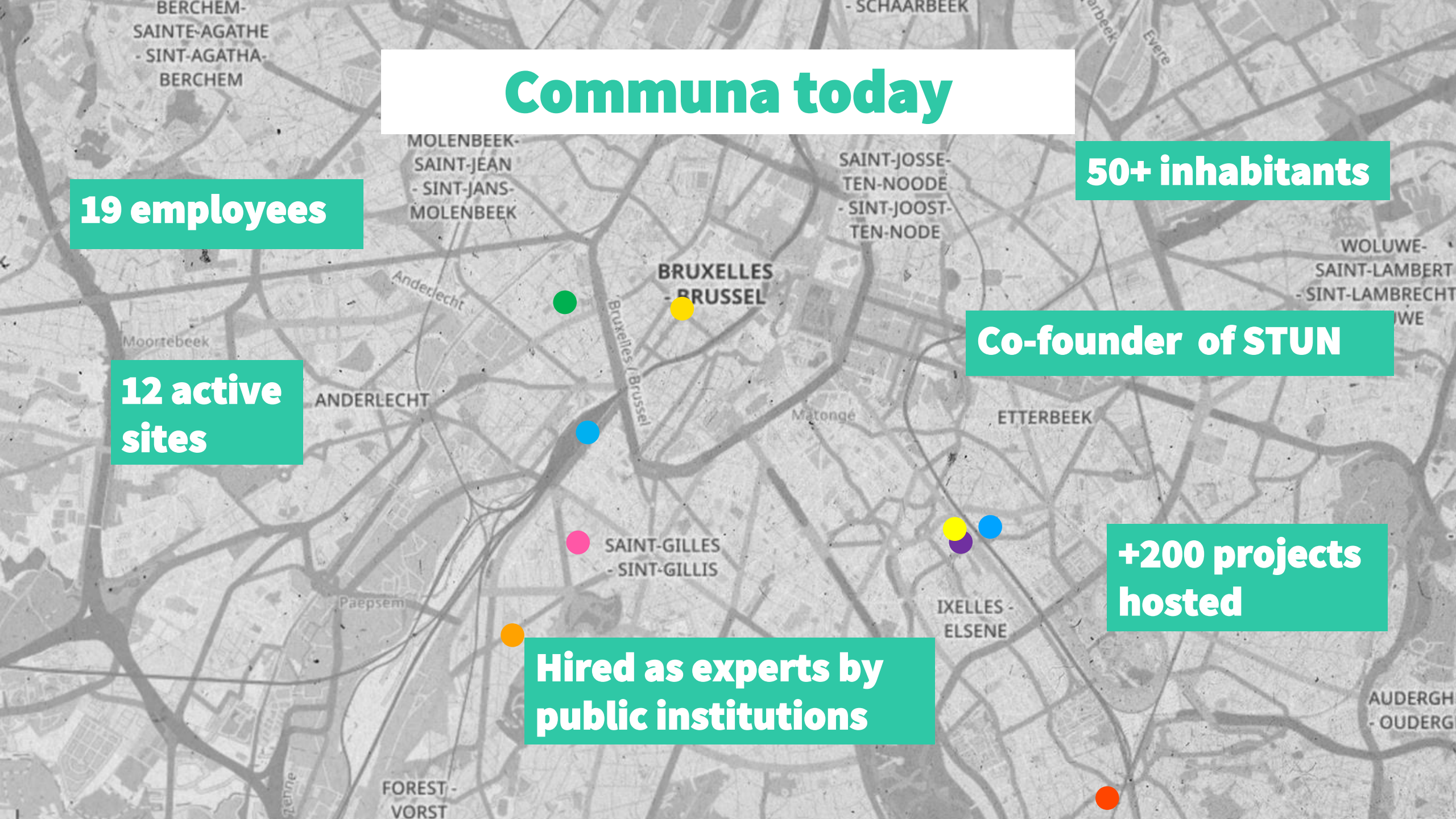
**50+ inhabitants**

**12 active sites**


**Co-founder of STUN**

**+200 projects hosted**

**Hired as experts by public institutions**





An aerial photograph of a public square paved with cobblestones. The square is filled with various community activities. In the upper left, a group of people is gathered around a long table, possibly for a craft or food stall. In the upper center, two people are sitting on a raised platform, one playing a saxophone. To their right, a group of people is sitting around a small table, engaged in conversation. In the lower left, a person is sitting on a bench, and another person is standing nearby. In the lower center, a group of people is sitting around a long table, possibly for a meal or a meeting. In the lower right, a person is sitting on a bench, and another person is standing nearby. The square is decorated with colorful flags and banners, and there are potted plants and a small table with a pink bag in the upper right corner.

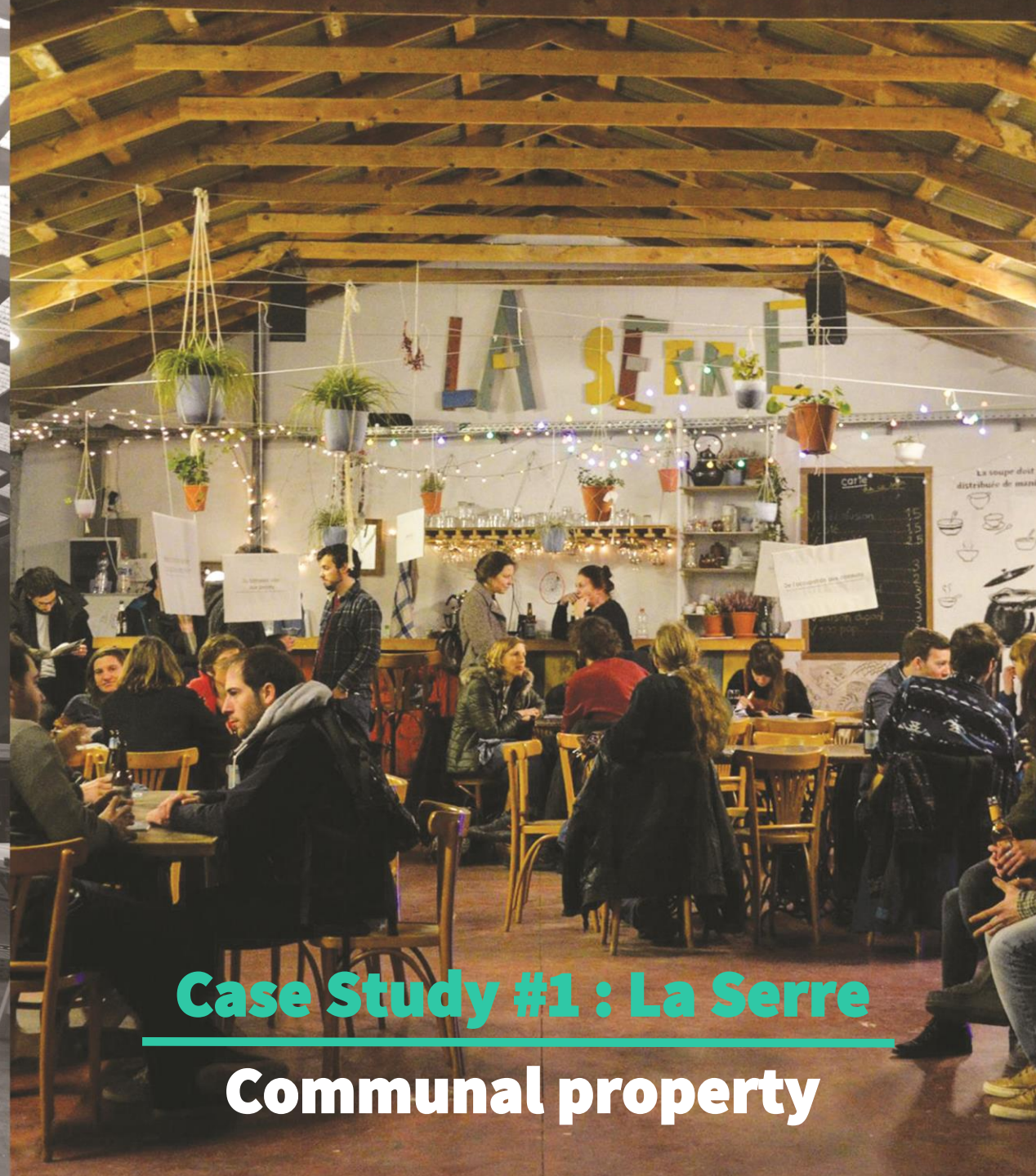
# **A few examples**

## **Case studies**





- Location : 1050 Ixelles
- Occupancy period: 5 years
- Housing/offices/purpose space
- CQD Maelbeek
- Communal subsidy



## **Case Study #1 : La Serre**

**Communal property**













**Mixed and multi-purposes uses**





**LES BOISSONS  
À LA CARTE  
SONT ISSUES  
DE PROJETS  
ENGAGÉS DANS  
DES DÉMARCHES  
LOCALES,  
ARTISANALES  
ET SOLIDAIRES.**

**jus**  
**Fruitcollect** est un projet  
qui lutte contre le gaspillage  
en récoltant les fruits non-  
consommés dans les jardins  
des particuliers. Une partie est  
redistribuée à des organisations  
sociales, l'autre produit le jus  
naturel et en circuit court que  
l'on vous sert ici !

Jus de  
Portulaque - 20 ml 1,5€

**café**  
**Mamé Noka** est  
une collaboration entre une  
entreprise bruxelloise et  
différentes formes africaines qui  
proposent du café équitable.  
Les échanges commerciaux  
sont directs, ce qui permet  
de rémunérer les producteurs  
et productrices de fèves de café  
à juste titre.

La Sève 1,5€

**bière**  
**100PAP** est une bière qui  
lutte pour l'accès à des logements  
pour les personnes sans-papiers.  
Les revenus servent à financer  
les charges liées à des  
occupations temporaires  
et visent le développement  
de solutions à long terme.

Ambre - 55 ml - 6° 3€

**bière**  
**Leopold 7** est une  
bière artisanale qui respecte  
tant la tradition brassicole  
que l'environnement. Ses  
ingrédients sont bio et locaux  
et sa production tente de  
minimiser au maximum son  
impact social et écologique.

3,5€

















R REPAIR TOGETHER  
DES REPAIR CAFÉS FR DE BELGIQUE



WWW.REPAIRTOGETHER.BE  
INFO@REPAIRTOGETHER.BE  
PARTENAIRE DE LA FONDATION INTERNATIONALE REPAIR CAFÉ





La soupe doit être  
distribuée de manière égale



Zna

La soupe doit être  
distribuée de manière égale







co  
mmu  
na





- Genesis : neighborhood committee
- Location : 1060 Saint-Gilles
- Occupancy period: 3 years
- Multipurpose space
- Regional subsidy
- Communal subsidy

## Case Study #2: Le Tri Postal

**Owner: SNCB**



















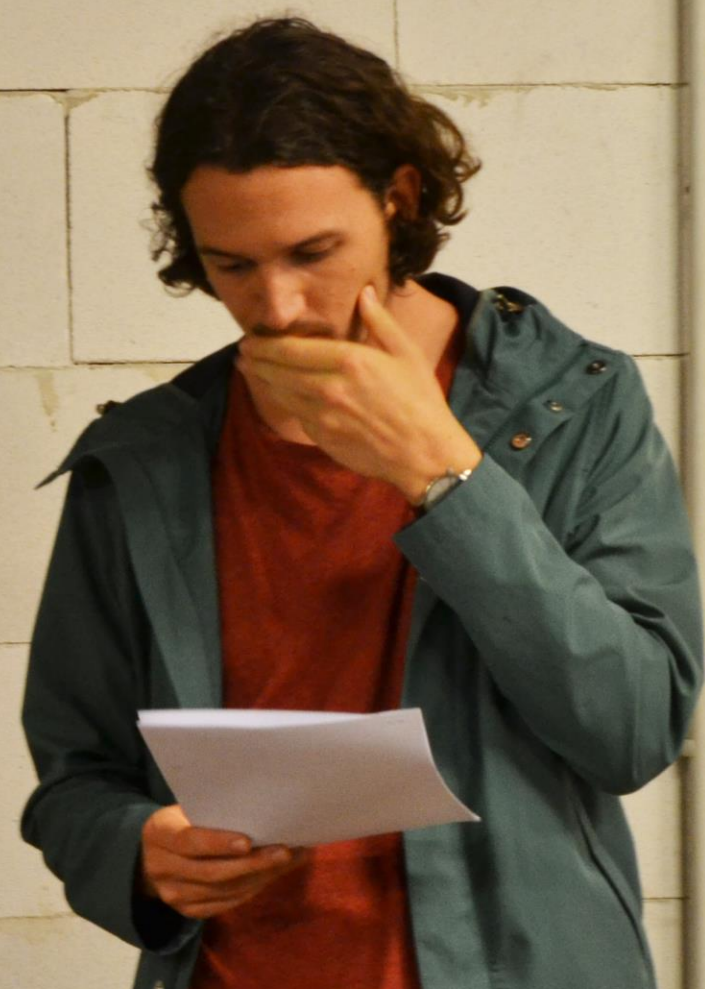
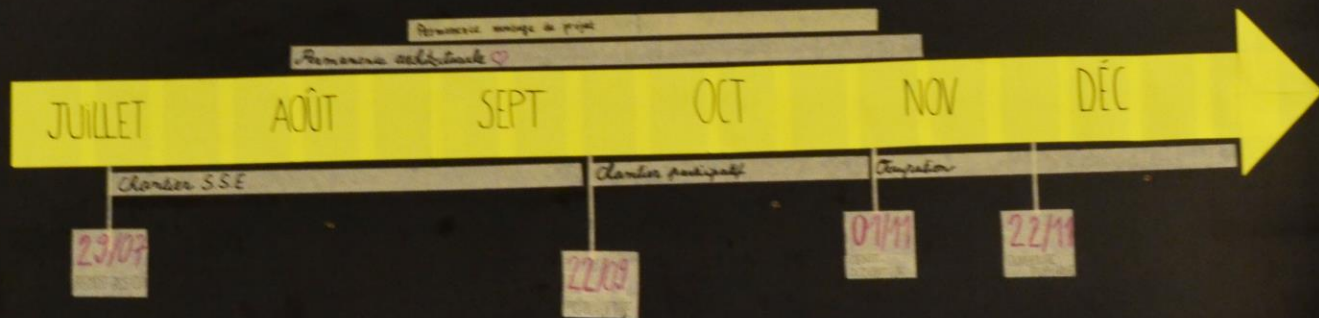




# MONTAGE PROJET

com  
muna

Van Commons tot montageprojecten: de buurt als gemeenschap  
Belang van de buurt staat centraal bij invulling van voormalig postsorteercentrum





























# 4. STUN







**STUN empowers  
platforms of social  
temporary use to build  
cities as commons.**

co  
mmu  
na



# MISSIONS

1. Improving our practices as Social Temporary Use platforms
2. Becoming Social Developers
3. Lobbying to change mindsets and regulations around Temporary Use



# MEMBERS

❖ [Yes We Camp](#) - France

❖ [Alte Mu](#) - Germany

❖ [Communa](#) - Belgium

❖ [Institut for \(X\)](#) - Denmark

❖ [Free Riga](#) - Latvia

❖ [Meanwhile Space](#) - United Kingdom

co  
mmu  
na



# VALUES

- ❖ **Non or limited profit-distribution**
- ❖ **Spaces = genuinely affordable for the local community**
- ❖ **Spaces = co-designed and co-managed by their users**





**Thank you**

[www.communa.be](http://www.communa.be)

[sam@communa.be](mailto:sam@communa.be)



# Porto, Circular City in 2030



**Porto.**



# A brief portrait of the city



# A brief portrait of Porto

~**230.000** inhabitants

~**5.000** inhabitants./sq. km

~**1,7M** inhabitants in Porto Metropolitan Area

~**12%** of national wealth in Porto Metropolitan Area

~**170.000** enter in the city/day (+78%)

~**89.000** jobs

~**85%** in the tertiary sector

~ **4,6 million** of tourists (2019)







**100%** of the energy purchased is from renewable sources

**48,0%** carbon reduction (2019 compared to 2004)

**70%** electric or hybrid municipal vehicles

**55 km** of bike lanes

**22 m<sup>2</sup>** of green area per inhabitant

**4,5 ha** of municipal vegetable gardens (13 different spaces)

**50%** of increase of the recycling rate (2016 – 2019)

**60%** of the population with selective collection of organic waste

**30%** organic collected door-to-door

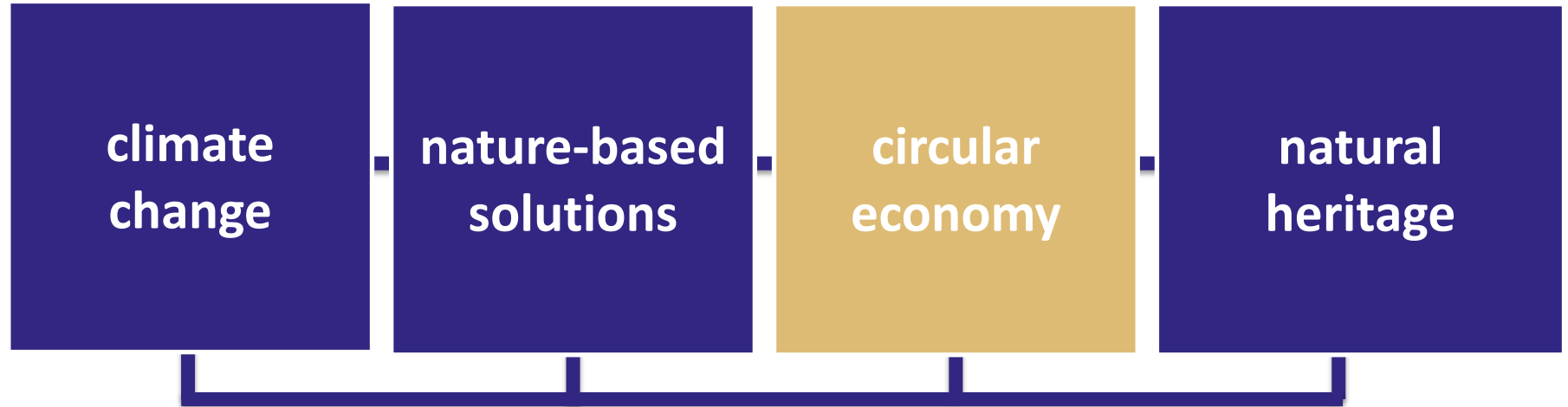
**< 1%** waste to landfill



**From strategy  
to action**



## four priorities for Porto





# The Roadmap for the Circular Economy in Porto 2030

*Roadmap para a cidade do Porto circular em 2030*

**Porto**





# Circular Economy Activators in Porto



Roadmap  
EC 2030

2017



2018

Partnership on Circular  
Economy



2019



2020

Network  
membership  
HISCAP – Historic  
Cities Against  
Plastic Waste



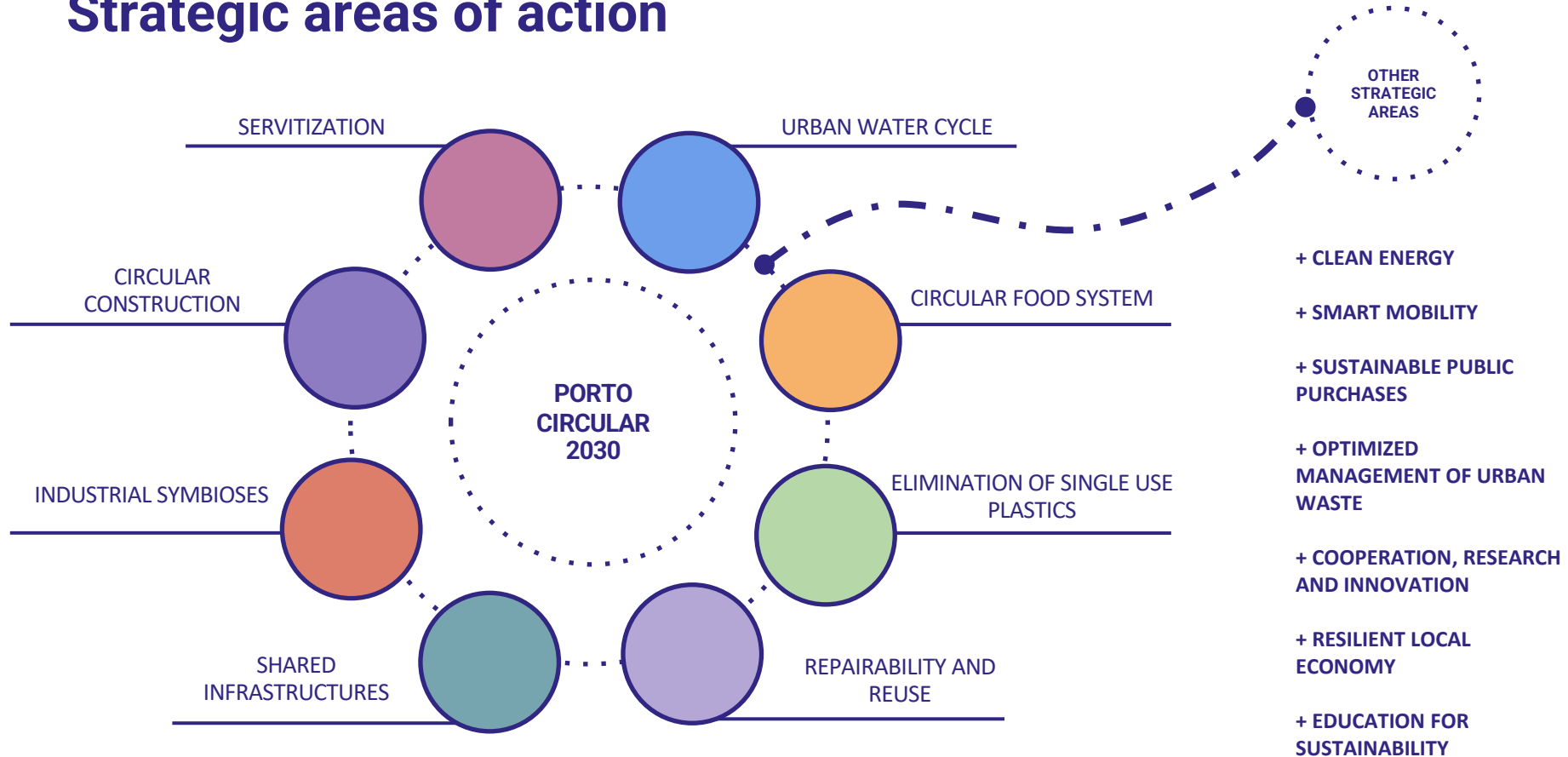
2021

Iceland  
Liechtenstein  
Norway grants  
EEA Grants Portugal  
Ministério da Economia do Espaço Económico Europeu  
L'Agence Économique de l'Union Européenne  
Unidade Nacional de Gestão  
Nacional Portugal

2030



# Strategic areas of action

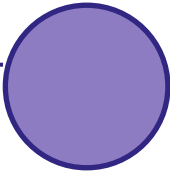




**Actions in several  
strategic  
areas**



## circular construction



- **Bank of Construction Materials (1987)**  
(14.700 elements in 270 buildings)
- **RCD Municipal Service – Ecocentros + Ecolinha**







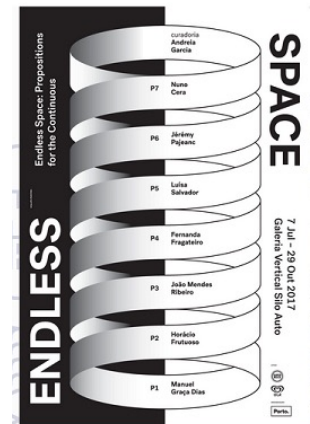
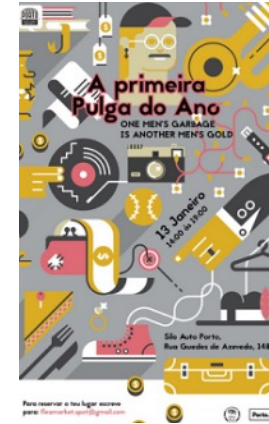
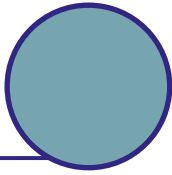
*Bank of  
construction  
materials to be  
available for  
free  
rehabilitation  
or for later  
reproduction  
(since 2010)*



**Porto.**



## SHARED INFRASTRUCTURES



## Multifunctional equipment

- .car park
- .cultural space:
- fashion parades
- concerts
- second-hand markets
- art gallery



**Porto.**





***Slaughterhouse***  
*Despite  
degradation,  
hosts cultural  
projects*

*Highly potential  
circular building*



**Porto.**



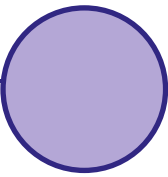


*conversion project  
(started in 2021)*

*projects of  
cultural dynamization,  
community involvement and  
social cohesion*



## Repairability and Reuse



- **School books Bank (2013)**  
(16.000 dropped books, 7.000 picked-up, 2019)
- **CREW/Lipor, Repair cafés**  
(electric and electronic equipment's)
- **REPLAY (2021)**
- **REBOOT (starting)**

010-11119

ZERO  
WASTE  
LAB







*1<sup>st</sup> Fab Lab in Portugal (2010)*

*3D printing  
Prototyping and rapid  
manufacturing technology*

**OPO-LAB** oporto laboratory  
of architecture & design



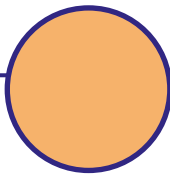
*Building and sharing  
packs of equipment in  
open source*

*→ Increases the  
reparability dynamic  
(reduction carbon  
footprint)*

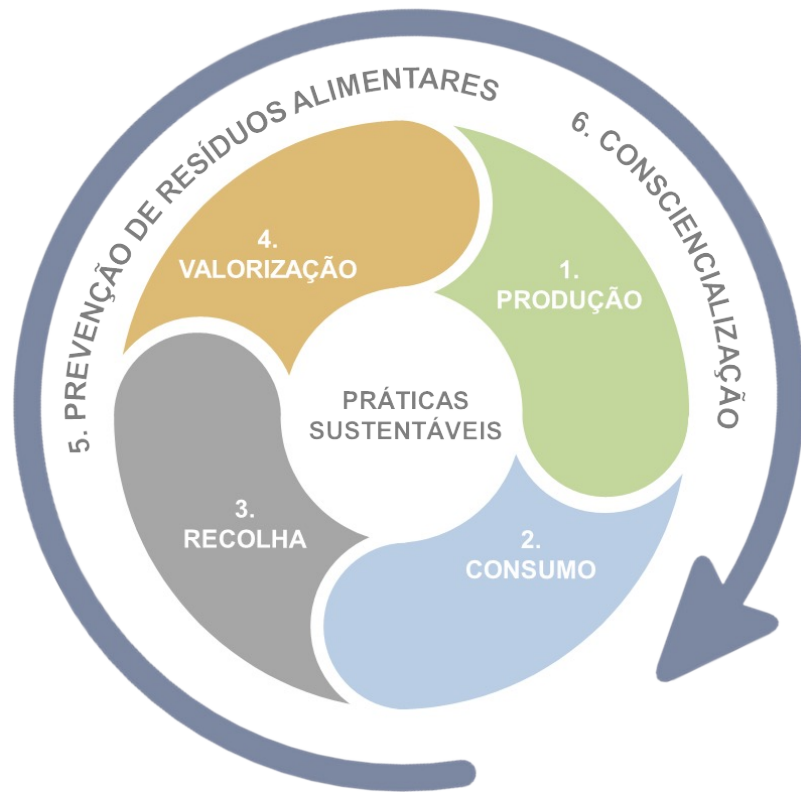
**Porto.**



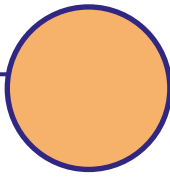
## Circular food system



**Promote the food system  
resilience and closing  
food cycle**







# **1. Promote local and regional regenerative food production**

## **Vegetable gardens**

Since 1997

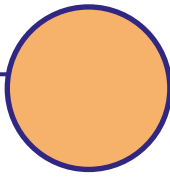
13 gardens | 507 families | 4,5 ha

480 composters | 400 kg organics/compostor/year



**13 Vegetable gardens | 507 families | > 4 ha**





## **2. Promote the access to healthy and sustainable local food**

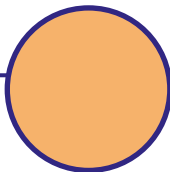
### **Bio Market**

Biologic products market - Parque da Cidade.  
17 years | weekly | 16 regional producers

**6 fresh products marketplaces with municipal  
support**







### 3. Expand food waste collection

#### Door to door – selective collection of organic waste

Comercial sector since 2008

Residencial sector since 2018

60% of population in 2021

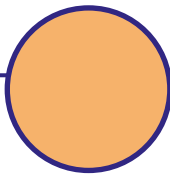
~7.000 ton/year of organic waste

63 000 containers of 7 litres

520 proximity containers







## **4. Value food waste**

### **Centralized treatment**

Composting Plant at Lipor

Since 2002 | 60 ton/year compost waste

### **Local treatment**

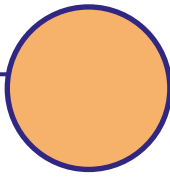
2291 individual composters since 2007

230-300 ton/year

15 community composting in 2021







## 5. Avoid food waste

Since 2016

- Solidarity Restaurants network
- Embrulha (Wrap it up) | Lipor
- Ugly food - pretty people eats ugly food!





# Porto Climate Pact

**Porto.**

[Contexto](#) [Pacto](#) [Promotor](#) [Subscrever](#) [Subscritores](#) [Testemunhos](#) [Atuar](#) [Reportar](#) [Novidades](#) [EN](#)

## Pacto do Porto para o Clima

PACTO – PT

PACT – ENG





# Porto Climate Pact



**AICCOPN**  
Associação dos Industriais da Construção  
Civil e Obras Públicas



**ANCVGREENROOFS.PT**  
ASSOCIAÇÃO NACIONAL DE COBERTURAS VERDES

**ANæ**  
JOVENS EMPRESÁRIOS



**bio ruma**  
CONSTRUTORES EM AMBIENTE E SUSTENTABILIDADE, Lda



**cesap**





**Thank you!**